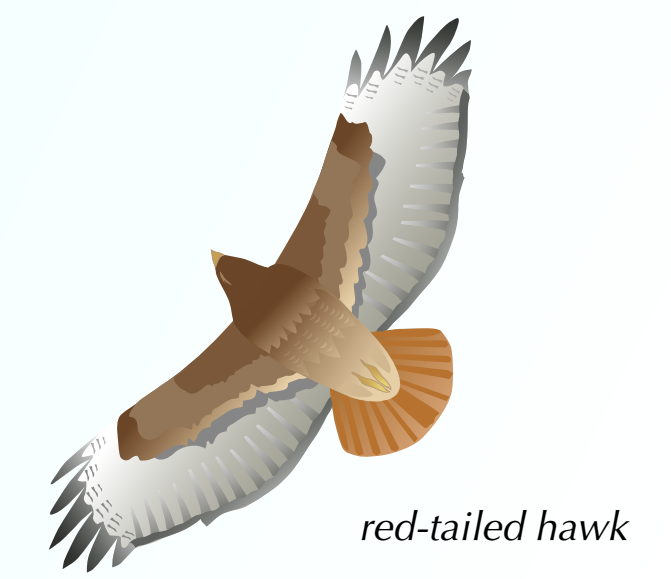


Wildlife Enhancement at Quarry Lakes

The tree planting in this area is designed to enhance bird and wildlife habitat. By capturing the sun's energy, lakeshore plants form the basis of a complex food web. An amazing array of insects feed on shoreline plants before becoming food themselves for frogs, fish, and birds. Pollutants carried by storm water enter our local creeks, lakes, and bay and have a devastating effect on wildlife. You can help preserve our wildlife and water resources by preventing trash, vehicle fluids, and household chemicals from entering your storm drains.

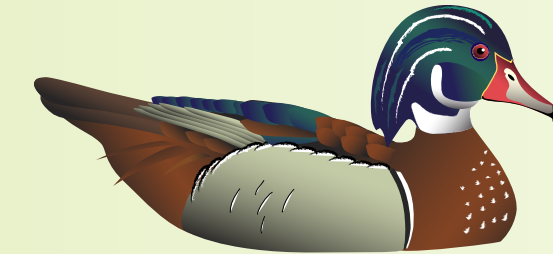
Thanks to the vision and financial support of the East Bay Regional Park District, Regional Parks Foundation, ChevronTexaco, Alameda County Fish and Wildlife Commission, and the Alameda Countywide Clean Water Program, this new wildlife habitat will benefit future generations of park users both human and animal.



red-tailed hawk



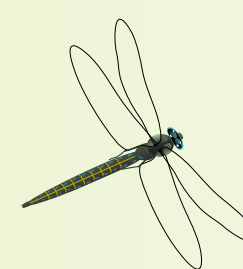
tree swallow



wood duck



mayfly



blue-eyed damer



western grebe



great blue heron

Illustration: Doyle Wegner



Sacramento squawfish



Carin High

Tree swallows perching on a nest box provided by the East Bay Regional Park District.



courtesy California Waterfowl Association, photo: John Meugge

Female (hen) and male (drake) wood ducks.



Dr. Lloyd Glenn Ingles © Calif. Academy of Sciences

Western grebe